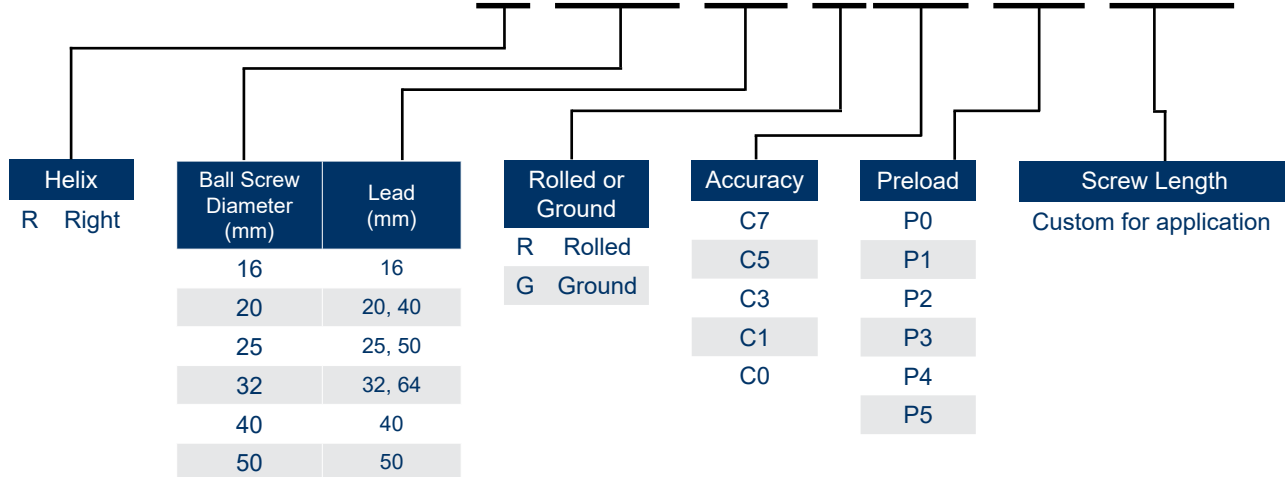


- 16mm to 50mm Screw Diameters
- 16mm to 64mm Leads
- Dynamic Loads to to 11,802 kgf
- Static Loads up to 38,859 kgf
- Available in Right helix
- C7 Standard Accuracy
- P1 Standard Preload
- Other Accuracies and Preloads Available Upon Request

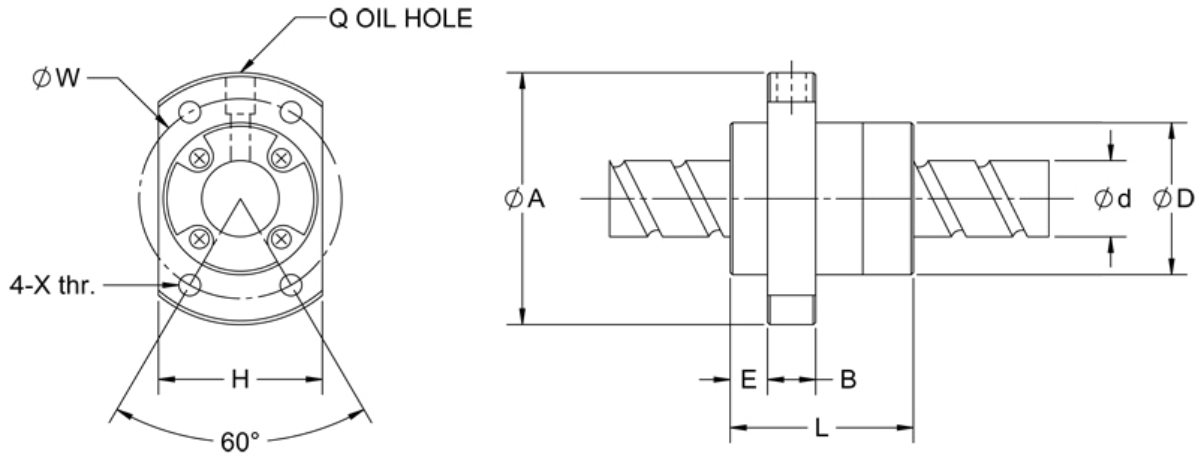


The SFE Series screw has a diameter of 16-50mm with a 16-64mm lead. This assembly provides a dynamic force of 11,802 kgf and a static forces up to 38,859 kgf. The maximum screw length is 6,000mm. The ends of the screw can be customized per your drawing. Please contact Anaheim Automation to discuss your specific requirements.

BSC-AAM-SFER-016-16-RC7-P1-750



L011049



Units are in mm

Model No.	d	l	Da	D	A	E	B	L	X	W	H	Q	n	Ca	Coa	K	H*
BSC-AAM-SFER-016-16	16	16	2.778	32	53	10.1	10	38	42	42	334	M6	1.7x2	1021	2409	29	R
BSC-AAM-SFER-020-20	20	20	3.175	39	62	12	10	47	5.5	50	41	M6	1.7x2	1321	3320	35	R
BSC-AAM-SFER-020-40	20	40	3.175	38	58	11	10	41	5.5	48	40	M6	0.7x2	582	1397	13	R
BSC-AAM-SFER-025-25	25	25	3.969	47	74	14	12	57	6.6	60	49	M6	1.7x2	1974	5188	43	R
BSC-AAM-SFER-032-32	32	32	4.762	58	92	17	12	71	9	74	60	M6	1.7x2	2876	8207	54	R
BSC-AAM-SFER-040-40	40	40	6.35	73	114	19.5	15	89	11	93	75	M6	1.7x2	4600	13281	66	R
BSC-AAM-SFER-050-50	50	50	7.938	90	135	21.5	20	107	14	112	92	M6	1.7x2	6512	19430	80	R

Units are in mm

*PLEASE NOTE - Each standard ball screw includes **one** nut. Additional nuts will be considered a custom request, and will require creation of a special part number.